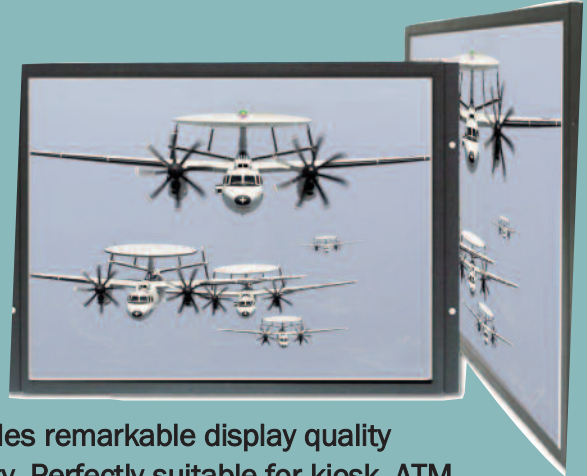


Daylight Viewable 15" Rugged Monitors

15" Open Frame LCD Display, LED Backlight 1600 NITS, XGA

The DuraBrite 15 open frame LCD display, built-in 1600 NITS high brightness for sunlight readable applications. It features a wide operating temperature, high brightness, AOT optical bonding, touch screen capable, and customized mechanical designs; and fulfills the demand for extreme environments. It offers the best visibility, performance and cost effective value. The high level of brightness together with fast response time and LED backlight technology, provides remarkable display quality guaranteeing product life cycle longevity, stability, and reliability. Perfectly suitable for kiosk, ATM, POS, marine, military, medical, transportation, and outdoor industrial applications.



Features:

- Sunlight Readable
- LED Backlight
- High Shock & Vibration Resistance
- Low Power Consumption
- Wide Temperature Range (-20°C~60°C)
- High Uniformity
- Low EMI Noise
- Wide Dimming
- Long Life

Applications:

- Marine
- Military
- Medical
- Transportation
- Industrial

SPECIFICATIONS

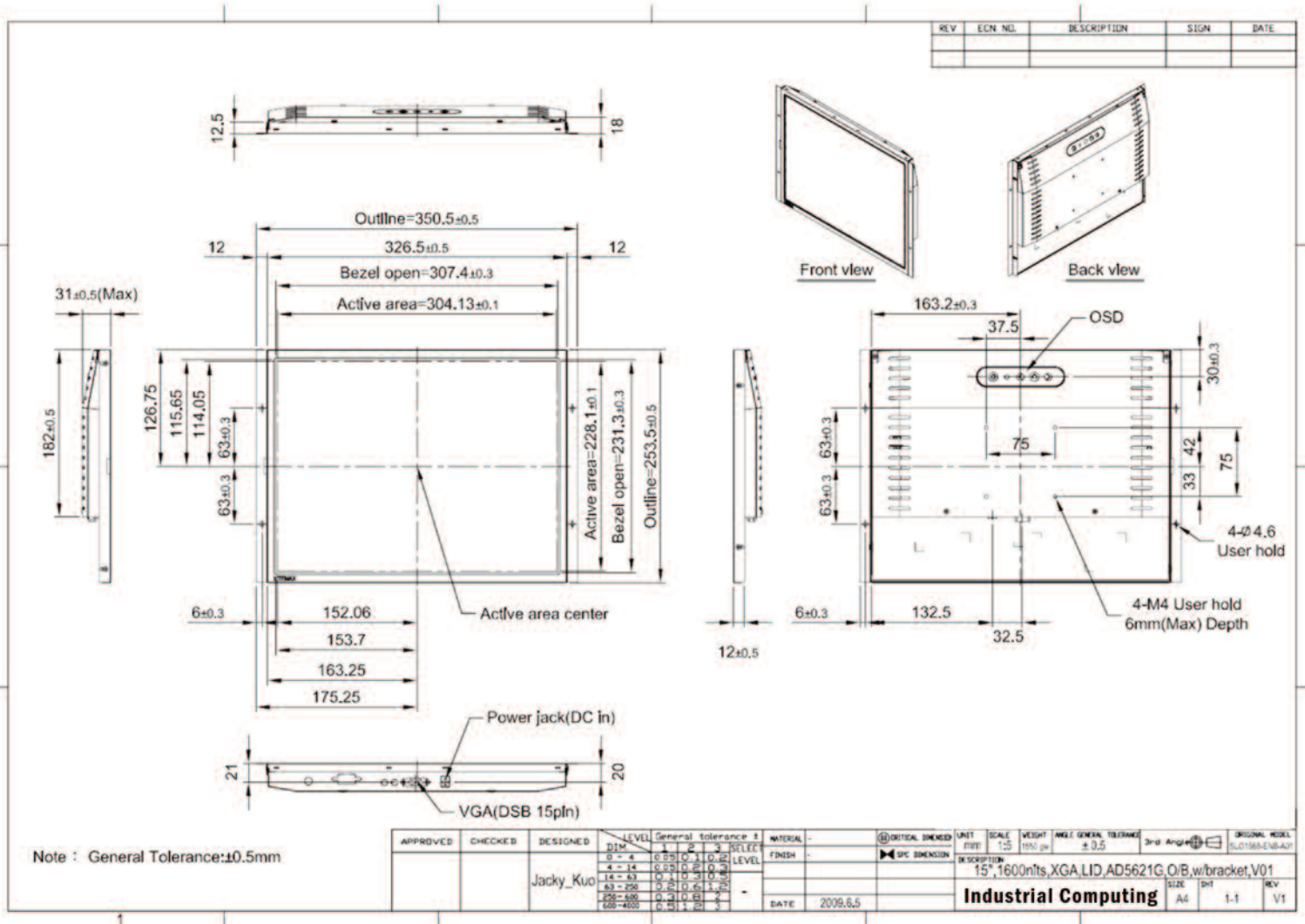
Model: Durabrite 15			
Description:	15" Open Frame LCD Display, LED Backlight 1600 nits, XGA	Control Board (Optional)	<input checked="" type="checkbox"/> AD5621GA <input type="checkbox"/> AD5621GD <input type="checkbox"/> AD5766GDVA <input type="checkbox"/> AD2662GDVAR
Display Area (mm):	304.128 x 228.096 mm	<input checked="" type="checkbox"/> AD5621GA	VGA+Audio
Brightness:	1600 cd/m ²	<input type="checkbox"/> AD5621GD	VGA+DVI
Resolution:	1024x768 (XGA)	<input type="checkbox"/> AD5766GDVA	VGA+CVBS+S-Video+Audio (Optional DVI / Component)
Contrast Ratio:	600 : 1	<input type="checkbox"/> AD2662GDVAR	VGA+DVI (Optional S-Video/ Component / Audio)
Pixel Pitch:	0.297(H) x 0.297(V)		
Viewing Angle:	+80°~-80°(H), +80°~-80°(V)	F/R Control Button	<input type="checkbox"/> 5 Key <input type="checkbox"/> 4 Key
Display Colors:	16.7M	<input type="checkbox"/> 5 Key	Power Switch, Menu, Select (+,-), Auto
Response Time (Typical):	8ms	<input type="checkbox"/> 4 Key	Power Switch, Menu, Select (+,-),
Power Input:	DC-12V	OSD Menu	Brightness, Contrast, H/V Position, Color, Phase, Clock...
Power Consumption:	23W	Optional	<input type="checkbox"/> AOT <input type="checkbox"/> Touch Screen <input type="checkbox"/> Waterproof
Dimensions (mm):	350.5 x 253.5 x 31		
Weight (Net):	1.5Kg		

Guardian DuraBrite™ 15 TFT LCD Monitors

MECHANICAL DRAWING

Outline Dimensions

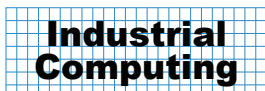
Unit:mm



OPTIONAL ACCESSORIES

Description	Description
ADAPTER, 12V.3.33A, 40W, PAA040F, P	CABLE, POWER, AC, 1830mm UK type
CABLE, POWER, AC, 1830mm USA type	CABLE, POWER, AC, 1830mm Australia type
CABLE, POWER, AC, 1830mm Europe type	CABLE, POWER, AC, 1830mm Japan type

Specifications subject to change without notice.



260 Bear Hill Road
Waltham, MA 02451

Tel: (781) 890-3111
Fax: (781) 890-7117
www.industcomputing.com